



Elektrotechnik Karl-Heinz Mauz GmbH

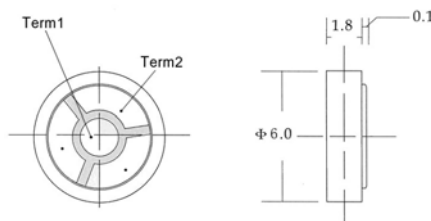
EMY-6018R/BC-SMD (Artikel-Nr. 200520)

EKULIT

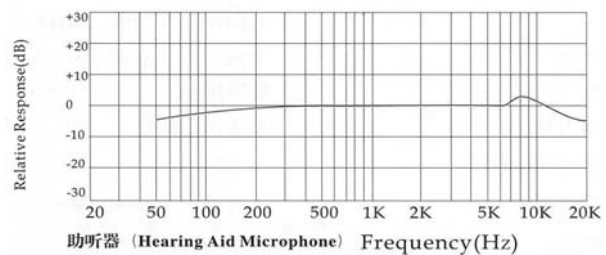
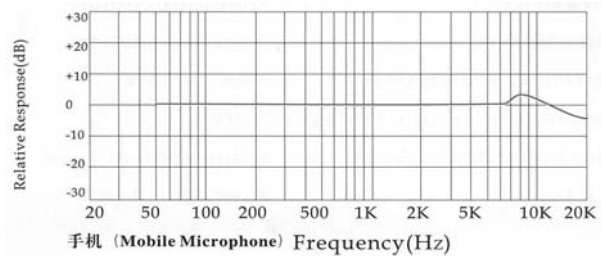
SPECIFICATIONS:

TYPE	UNIT	EMY-6018R/BC-SMD
Sensitivity (0dB=1V/Pa. 1kHz)	dB	-44±4
Directivity		Omnidirectional
Impedance		Low impedance
Current consumption	mA	Max. 0.5
Standard operating voltage	V	1.0-2.0
Sensitivity reduction		within -3dB at 1.5V
S/N ratio	dB	more than 58
Operating Temperature	°C	-10~+45
Storage Temperature	°C	-20~+60

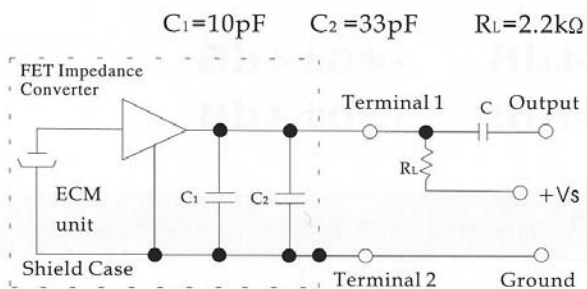
Dimensions :
(Unit: mm)



Typical Frequency response curve:



Schematic diagram :



Adresse: **Felix-Wankel-Str. 35 • 73760 Ostfildern/Nellingen**

Tel: **+49-711/3414023**

Fax: **+49-711/3414024**

E-mail: **info@ekulit.de**

Web site: **www.EKULIT.de**